

## INDUSTRIAL UNIT TO LET

Well located space within secure multi-storey car park in Canary Wharf.

Ideal for medium to long term warehouse storage, fulfilment and logistics orientated businesses.

1 Westferry Circus,  
London,  
E14 4HD

Size  
1,900 sq. ft.

Price  
£7,125 / month

*Stashbee* 

*Stashbee* 

# Details

Space available to rent in well-maintained and secure multi-store car park in Canary Wharf. The space comprises of 1,900 sq ft of secure and dedicated space constructed of security mesh fencing with 2.5m secure sliding access door.

Located on level -1 the space benefits from easy access to the entrance and exit of the car park, secure vehicle and pedestrian access, CCTV coverage and accessible on a 24/7 basis.

The space has metered electricity with potential to install three-pin sockets if required. Offered as a dedicated or shared space in the current arrangement with the potential to subdivide the space with fencing if required.

Ideal for medium to long term warehouse storage, fulfilment and logistics orientated businesses.

## Services and features

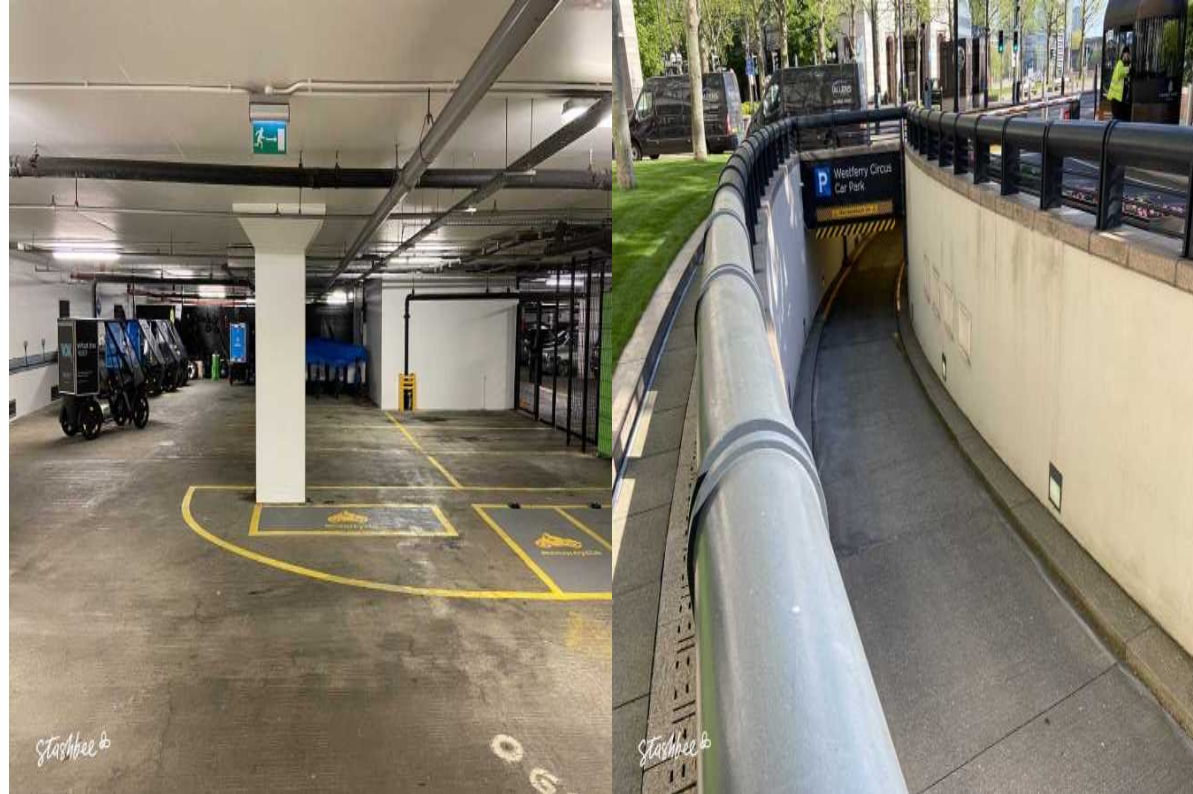
- CCTV
- Security patrols
- Lighting
- Metered electricity
- Mesh security fencing
- Max height 2 metres

Rates advertised assume a short-term, flexible agreement. Longer term leases taking the full space will be able to achieve more favourable rates.

# Pricing

Monthly      £7,125      £3.75 /sq ft.

Annual      £85,500      £45.00 /sq ft.





# Location

Outside the Congestion Zone and within ULEZ and LEZ Charge Zones the site is well positioned in Canary Wharf, home to the highest population density in the UK with 106,716 people per square kilometre, world renown international business centre and more than 300 shops, cafés, bars, restaurants, fitness facilities and other businesses. Located between the Isle of Dogs and Poplar, occupiers benefit from good transport links via the Jubilee Line and DLR while the East India Dock Road and A12 provides access into other areas of the borough such as Whitechapel, Bethnal Green and beyond into the City of London and Hackney.

**1 Westferry Circus,  
London,  
E14 4HD**

# Contact



**Will Cattigan**  
will@Stashbee.com  
07500 260702



**David Mantle**  
david@stashbee.com  
07939 945854



stashbee.com

support@stashbee.com

020 7078 7561

